



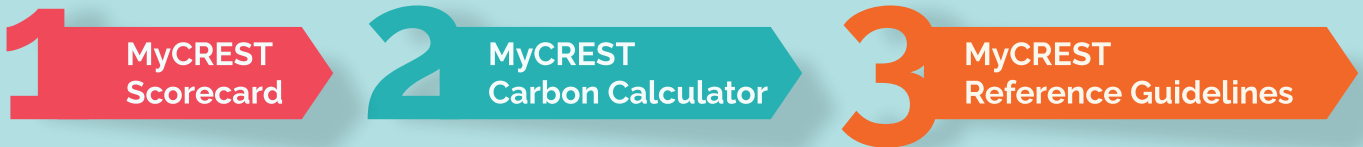
# MyCREST

MALAYSIAN CARBON REDUCTION & ENVIRONMENTAL SUSTAINABILITY TOOL

**MyCREST** stands for Malaysian Carbon Reduction and Environmental Sustainability Tool. MyCREST delineates the strategies and green elements thus acts as a guide to all stakeholders of the construction industry in adopting sustainable development practices. MyCREST calculates and quantifies the actual carbon emission at every stage of a building life cycle. This tool aims to guide, assist, quantify and thereby reduce the built environment's impact in term of reduced carbon emissions and other environmental sound practices. MyCREST integrates socioeconomic considerations related to the build environment and urban development.

## MyCREST TOOLS

MyCREST essentially combines three basic tools to construct a "scoring plan", which is then used to assess a building for certification. The tools are:



Each tool is the basis of rating for each phase of the project. MyCREST awards different star rating to the different phases of a project and awards an overall star rating. In this way, all three phases of the project namely the Design, Construction and Operation & Maintenance are being assessed.

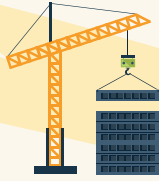


# MyCREST CERTIFICATION

Design



Construction



Operation & Maintenance



Provisional Design Certification

Design and Construction Certification

Design, Construction and Operation & Maintenance Certification

Operation & Maintenance Certification



## MyCREST RATING CERTIFICATION

MyCREST RATING

MyCREST RATING



80-100  
-----  
70-79  
-----  
60-69  
-----  
50-59  
-----  
40-49



### Connect with Us

creamcidb

Construction Research Institute of Malaysia

www.cream.my

SCAN FOR APPLICATION FORM



Elevate quality, safety & health, and environment via our assessment tools

**CONTACT US FOR MORE INFO:**  
Construction Assessment Centre (CASC),  
Construction Research Institute of Malaysia,  
Makmal Kerja Raya Malaysia (MKRM)  
Lot 9, Seksyen 91, Jalan Chan Sow Lin, 55200 Kuala Lumpur Malaysia  
**Phone** : 03 9212 0165  
**Email** : casc@cream.my / syed@cream.my