










SUSTAINABLE INFRASTAR CERTIFICATION

A certified assessment that achieves 40% and above credit percentage will be awarded with a-star rating. The classifications of assessment points with their respective ratings are as follows:



WHICH PROJECTS ARE APPLICABLE?

Sustainable INFRASTAR can be applied to most types of infrastructure projects (except the building portion) including the followings:

| Type of Infrastructure | Classification of Infrastructure |
|---|---|
|  | <ul style="list-style-type: none"> Toll Expressway Federal Road State Road Municipal Road Tunnel Highway Bridge |
|  | <ul style="list-style-type: none"> Heavy Rail (Commuter Rail) Express Rail Link (ERL) Light Rapid Transit (LRT) Mass Rapid Transit (MRT) High Speed Rail Monorail Funicular Railway Line (Cable Railway) |
|  | <ul style="list-style-type: none"> Dam/Reservoir Water Supply Network Water Treatment Plant |
|  | <ul style="list-style-type: none"> Runway Public Infrastructure Airport Rail Link |
|  | <ul style="list-style-type: none"> Waterway Canal Port Jetty Marina |
|  | <ul style="list-style-type: none"> Solid Waste Treatment Plant Incinerator Recycling Plant Sewerage Pipe Network Wastewater Treatment Plant |
|  | <ul style="list-style-type: none"> Power Plant Power Supply Network Telecommunication Network |

Sustainable INFRASTAR



CONTACT

Construction Research Institute of Malaysia (CREAM)
Level 29, Sunway Putra Tower No. 100, Jalan Putra, 50350 Kuala Lumpur
General line: 03-2779 1479 Fax: 03-2779 1474 Email: casc@cream.my

INTRODUCTION

Infrastructure asset development has huge impact on social, environment and economy. Therefore, it is critical for any infrastructure project to balance economic, social and environment sustainability factors in its development. The need for a more standardized method or tool to appraise the sustainability of such development is becoming more essential.

The Malaysian Construction Industry Development Board (CIDB) has developed a sustainable infrastructure rating tool for Malaysia with an ultimate purpose to assess the extent of sustainability measures adopted by infrastructure projects in Malaysia primarily at both design and construction stages. Sustainable INFRASTAR acts as a design and measurement tool to ensure consideration on sustainable elements are incorporated early on in the development of project.

WHAT IS SUSTAINABLE INFRASTAR

Sustainable INFRASTAR stands for Sustainable Infrastructure Rating Tool where it applies an objective & evidence-based rating system that assesses the following conditions:

| | |
|----|---|
| 01 | Land use planning and management |
| 02 | Resource management |
| 03 | Energy and water management |
| 04 | Biodiversity and other ecosystem services |
| 05 | Social and cultural protection |
| 06 | Stakeholder coordination |

WHAT ARE THE OBJECTIVES OF SUSTAINABLE INFRASTAR: -

- To create a continuous awareness on the importance of sustainability throughout the pre-commissioning stages of infrastructure projects.
- To prioritise significant environmental and social attributes for sustainable infrastructure as early as the conceptual stage.
- To convey an improved performance related to environmental and social through project design and construction.
- To recognise and reward efforts made by projects towards achieving an exceptional level of sustainable infrastructure.
- To ensure the implementation of environmental and social best practices are in accordance to the standards adopted locally and globally.
- To measure the level of sustainability of infrastructure projects.

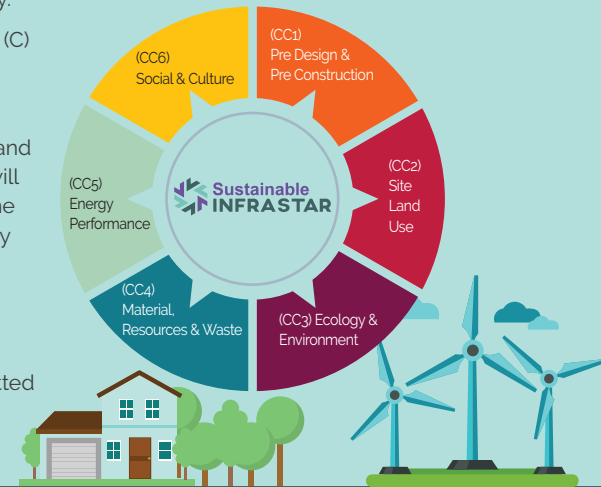
THE ESSENCE OF SUSTAINABLE INFRASTAR

- Comprises of six (6) core criteria, twenty-seven (27) criteria and eighty-nine (89) sub-criteria that encapsulate the three pillars of sustainability namely environment, social and economy.
- Statements are classified as Compulsory (C) and Applicable (A).

Compulsory (C) - Statement represent sub-criteria that a project must strive for and consequently, appropriate credit points will be awarded based on compliance with the stipulated requirements and supported by appropriate and relevant documented evidence.

Applicable (A) - Statement refer to a sub-criteria that may be excluded or omitted due to its irrelevancy to the project.

6 Core Criteria (CC) of Sustainable INFRASTAR



ASSESSMENT CLASSIFICATION

Assessment takes place at two project stages; namely design and construction.

| Certification Award | Assessment Point | Assessment Details |
|-------------------------------------|---|---|
| Design Certification (Provisional) | At Pre-Construction Stage | Credit points will be awarded based on the policy and target set in planning as well as a documented evidence to validate their definite execution in the project design. This is only an interim assessment and award. |
| Design & Construction Certification | Between Pre-Commissioning to Certificate of Practical | Credit points will be awarded based on policy and target addressed in the detailed design as well as a documented evidence to verify their definite execution in actual construction. |

